

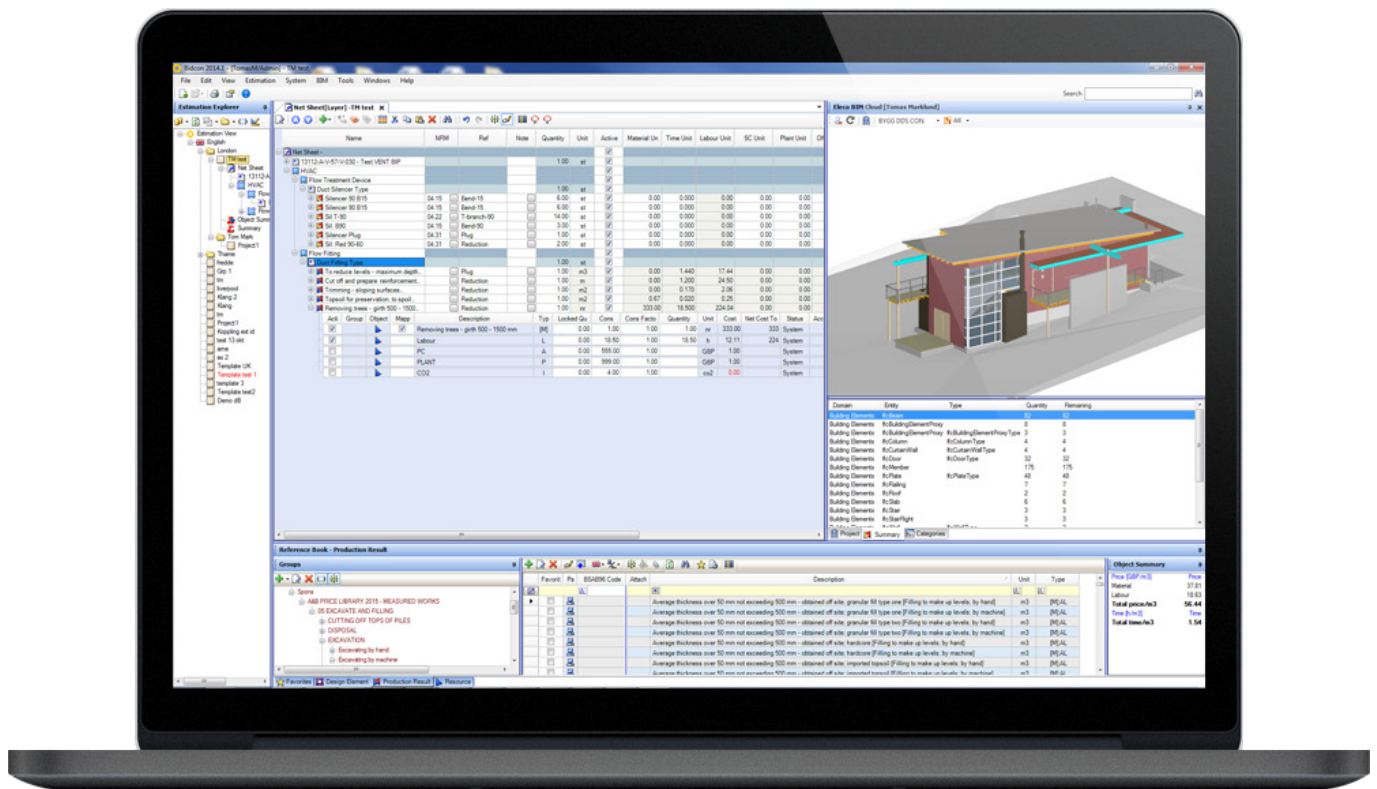


Bidcon®

Cost estimation tool for the entire construction sector

It is important to quickly find the most cost effective solutions that meet the requirements whether it is the matter of a tender/production estimations or management processes. Bidcon will help you to cost estimate material, labor, plant/machine and others resource costs. Bidcon also add information like production codes and material grouping that is useful in the planning process of work activities and procurement.

Bidcon is the third generation of spreadsheet applications and it is still continuously being developed in cooperation with our customers. The program is developed using modern technology which opens up new opportunities and makes it possible to meet the market demands of today and tomorrow. Our extensive database (price books) from Spons will be annually updated with the new versions of Bidcon.



Bidcon is an easy to use spreadsheet software for small and large businesses.

Advantages

- Quick and easy to create a structured and detailed cost estimations
- Extensive price books with possibility to create own (Customized) recipes
- Easy to adjust the contents of the spreadsheet records by the conditions that apply to your project
- Different Sheets with alternative views and Summaries
- Import and Export BOQ, price requests and BIM objects (Quantity postings)
- Codes, Accounts and Material groupings to assist selections
- Security levels as well as User levels that are customizable.
- The maintenance contract includes free access to support during office hours and free software updates
- We offer open training at several locations or completely customized training for your company to you as quickly as possible to get the benefit of Bidcon.



Bidcon®

Wide range of functionalities

Bidcon English Standard - consists of estimation explorer, reference books (price book library), spreadsheets and summary sheets.

Import and Export is important, **Price requests**, importing **BOQ** with structures and **BIM** functionality as well as predefined and customizable reports/printouts is available, as well as exporting directly to Powerproject

Global search and filter, **Codes** for production or structure and **Accounts**/material grouping can be used to simplify all stages of estimating.

Security levels with **user management** of groups and/or individual customizable rights/settings for both program and estimations

More advanced features like Production Phase and Travel Solution, Multi Estimation, Locations and Cost Control is currently only available in Sweden

Unit price management is available and is a great way to give quotes/tenders. Distributing adjustments and profit to each separate activity/object.

In the **Estimation explorer** there are both current and previously saved estimations. Depending on the configuration of BidCon, the function is different. Estimations saved in the database, which we recommend, will always be opened in the Explorer where you can see or hide all estimations, closed or opened. File-based estimations will only be shown in the explorer if they are opened.

Reference books are different libraries of Mixed Elements (ME), Design Element (DE), Production Results (PR), Resources (RES) and Articles from Vendor Pricelists. These dictionaries contain predefined recipes that can be easily adjusted in the estimation. The pane **Favorites** is the users own shortcuts to ME, DE, PR, RES and Vendors pricelists and can be organized, with own structure, to achieve quick and easy access

Welcome to contact us for a free demonstration of our products.
Call us on +46 (0)10 - 130 87 00 or send an email to info@consultec.se
www.consultec.se



Mixed Elements (ME) is per definition a typical room, space or area, consisting of one or more Design Element (DE) or Production Results (PR) – Not in UK standard edition

Design Element (DE) is complexed recipes or functions, consisting of one or more production results (PR).

Production Results (PR) is Basic recipe or activity consisting of different types of Resources such as Labour, Material or Subcontractor with time consumption and costs.

Resource (RES) is the basic elements in the estimation. Resources can be of different types such as Plant/machines (P), materials (M), Labour (L), Subcontractors (SC), Officers/officials (O), Information (I), tendered Subcontractor [SC], tendered materials [M] and Adjustment (J).

An **Article** is a specific product that can be linked to a material resource, this pane also contains imported Vendor Price Lists, discount letters and supplier information is accessed. – Not in UK standard edition

Manual posting, notes and attachments is other features that come in handy.

All postings are placed in an Estimation Sheet. Most postings that a project should contain are entered into the Net Sheet.

Postings related to expenses regarding the project can be entered in a separate **Tender Sheet**. Expenses (such as production costs) can be entered in the **Expense Sheet**, often used as template. – Not in UK standard edition

Object Summary is a sheet where all active entries are summarized and can be adjusted regarding the various resources/articles prices etc.

In the **Summary** transferred values / ratios from the estimations sheets can be added more information (adjustments, calculations, key figures) to retrieve a tender sum. Use predefined or customize with Excel.

Consultec®
ElecoSoft